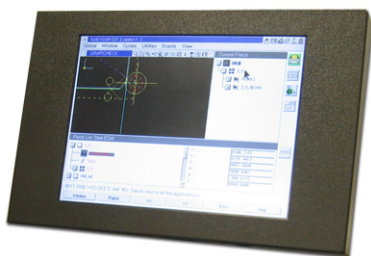


# Replacement TFT-LCD Monitor



## Series: AGIE

The TFT-Industrial-Monitor is a modern concept to replace old or defective 14" CRTs and 15" TFTs mounted in units of AGIE. All Units are Made in Germany, using only high quality components. A mechanic housing, similar to the original Unit, makes it easy to exchange in just a few minutes. The new display is plug&play 100% compatible to the AGIE equipment and offers a Backlight Lifetime of 50.000 hours.

- **For AGIETRON, AGIEMATIC and AGIEVISION**
- AGIE Special Timings
- mech. Type: Front plate, Chassis, Desktop
- Powersupply 110-230VAC / 24VDC internal
- TFT-Display: 12,1" / 15,1" active matrix
- Brightness: 250 cd/m<sup>2</sup> / 300 cd/m<sup>2</sup>
- Contrast Ratio: 200:1 / 500:1
- Backlight Lifetime min. 50.000 h
- with antireflex coated glass
- VDE 0100, 0411, 0804, 0871B and CE-Mark

### Order-No.:

AGIEMATIC C (CU)	2361116
AGIETRON	2361117
AGIEMATIC CD	2361118
AGIEMATIC CF	2361119
AGIEVISION / AGIECUT Evolution	2361224

Subject to change without prior notice and any misprints